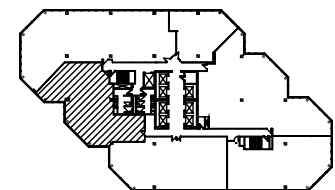


SUITE 870
SCALE: N.T.S.

2,692 RSF
09/18/07



 **KEYPLAN**

F O R M
DESIGN STUDIO, Ltd.
116 South Central Avenue, Phoenix, Arizona 85004
Phn: (602) 712-0400 Fax: (602) 712-0469

2800 NORTH CENTRAL
PHOENIX, ARIZONA
85004

MANAGED BY:
GAEDEKE GROUP, L.L.C.
2800 NORTH CENTRAL AVENUE
SUITE 1720
PHOENIX, ARIZONA 85004
(602) 287-3300

LEASED BY:
TRANSWESTERN
2415 EAST CAMELBACK ROAD
SUITE 520
PHOENIX, ARIZONA 85016
WILLIAM ZUREK (602) 954-9856